

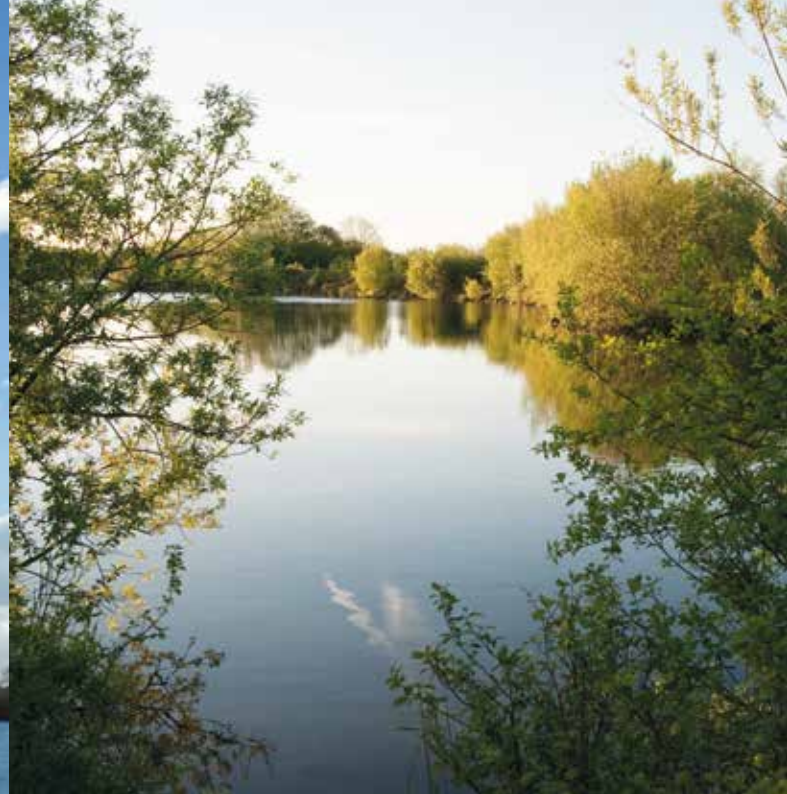


# Elements

WELCOME TO  
A NEW LIFE IN THE COTSWOLDS

N°S 4 & 5







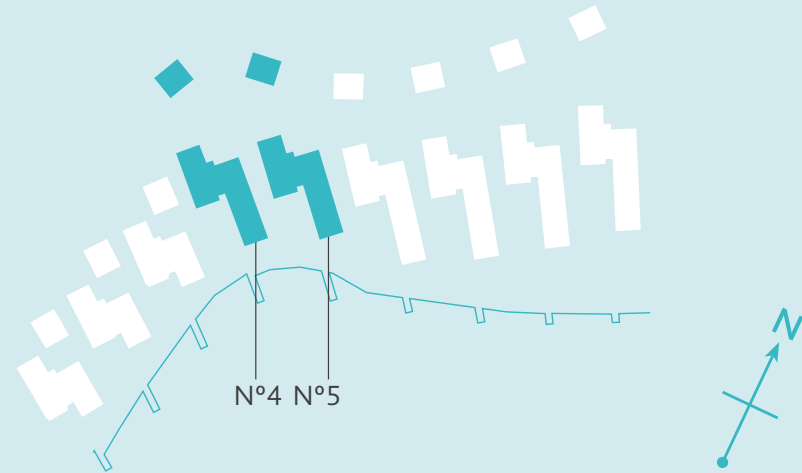


# Over 2800ft<sup>2</sup> of living space

Central to the Elements development, situated in the middle of the bay, these 2/3 bedroom homes enjoy far reaching views across the lake.

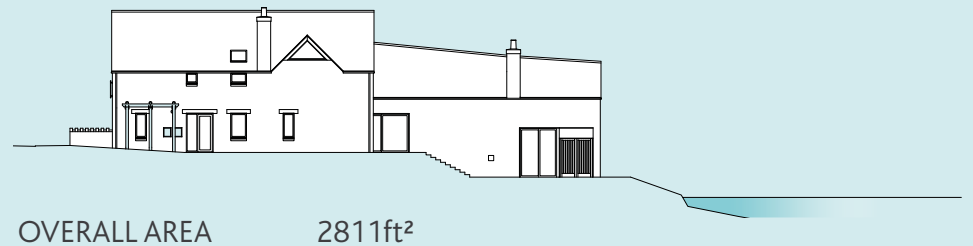
Maximum advantage is taken of the views through extensive use of glazing on the south facing elevation, with two terraces and a balcony extending the living space from the inside out at every opportunity. Add to this an open plan design for an immense feeling of space and light throughout these homes.

Plot locator



Side elevation

Each Elements home is designed to work in harmony with the natural levels of the land as it steps down to the lake.



Extremely flexible, largely open plan living space with large format glazing / doors in all rooms with lakeside views.

## GROUND FLOOR

### MAX. ROOM DIMENSIONS


Kitchen / Dining	12.10 x 5.45m	39'7" x 17'10"
Living	6.75 x 5.45m	22'1" x 17'10"
Bedroom 2	3.52 x 4.08m	11'6" x 13'4"
Ensuite 2	2.80 x 1.38m	9'2" x 4'6"
Bedroom 3 or Family room	4.52 x 4.25m	14'9" x 13'11"
Utility	2.48 x 4.25m	8'1" x 13'11"
Shower room	1.93 x 2.72m	6'3" x 8'11"
Double garage	7.03 x 5.915m	23'0" x 19'4"

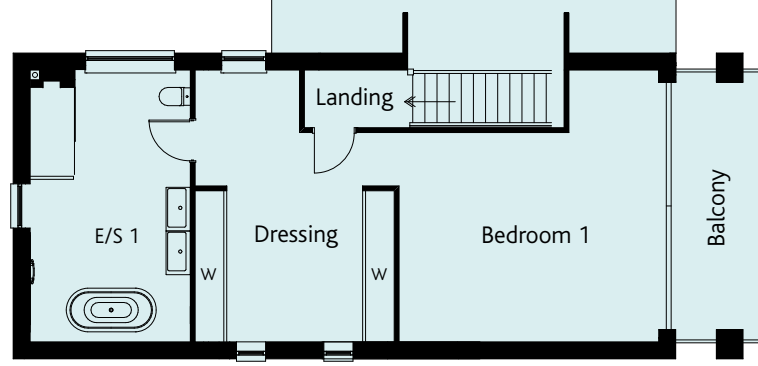
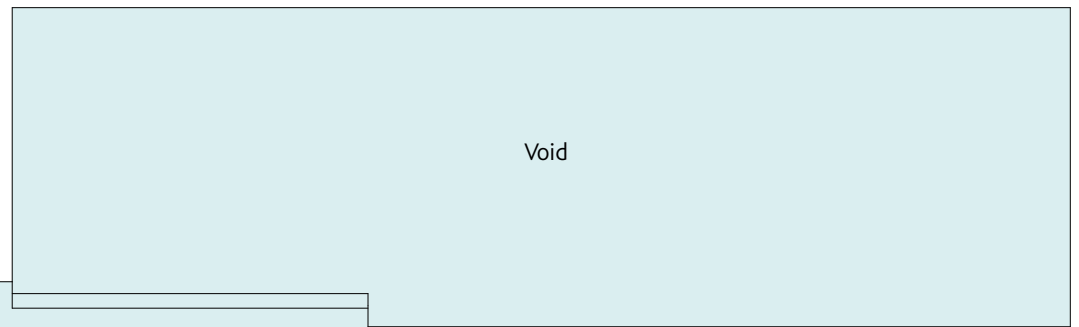
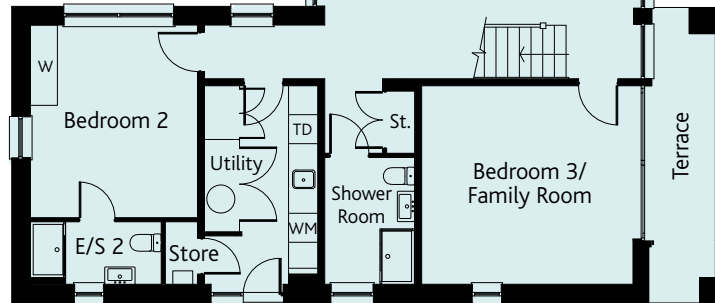
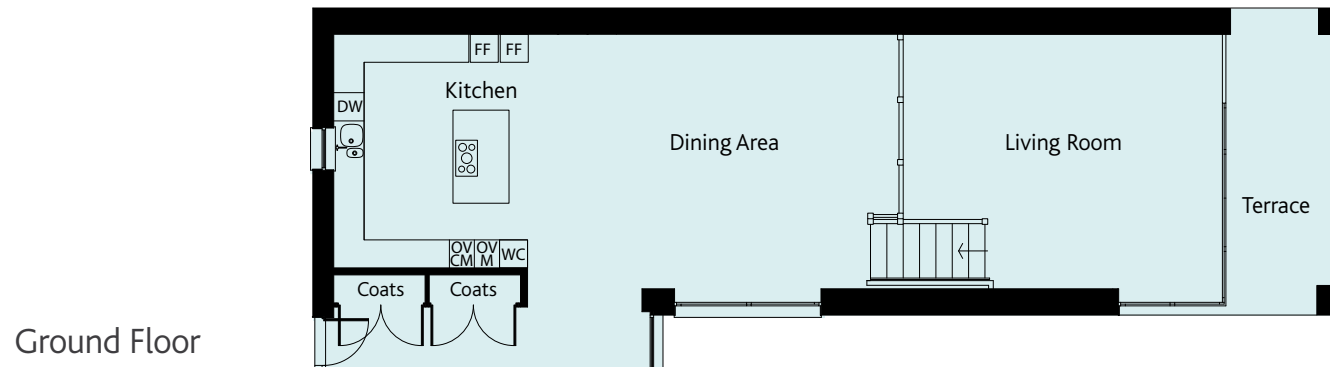
## FIRST FLOOR

### MAX. ROOM DIMENSIONS

Bedroom 1	5.35 x 5.55m	17'6" x 18'2"
Dressing	5.55 x 4.1m	18'2" x 13'5"
Ensuite 1	5.55 x 3.27m	18'2" x 10'8"

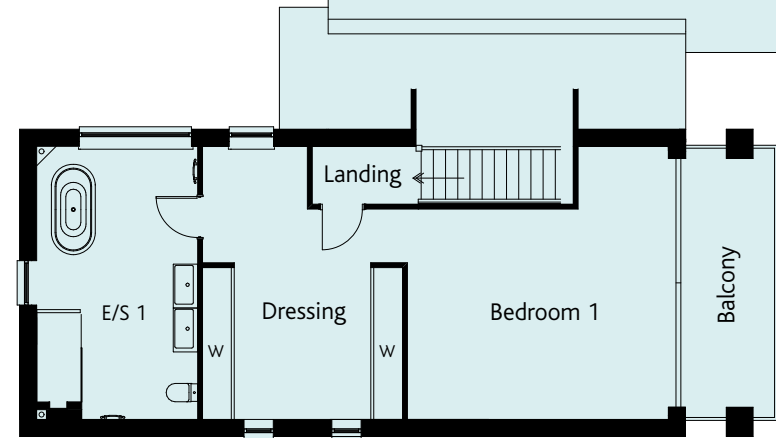
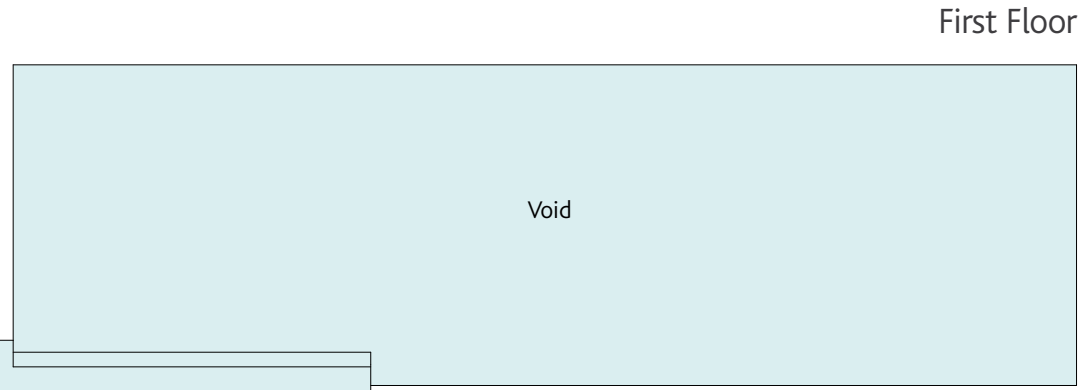
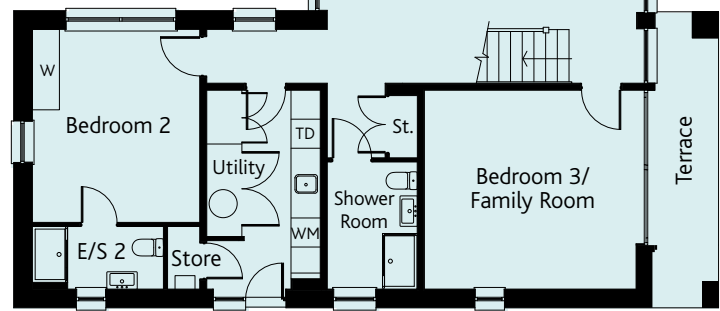
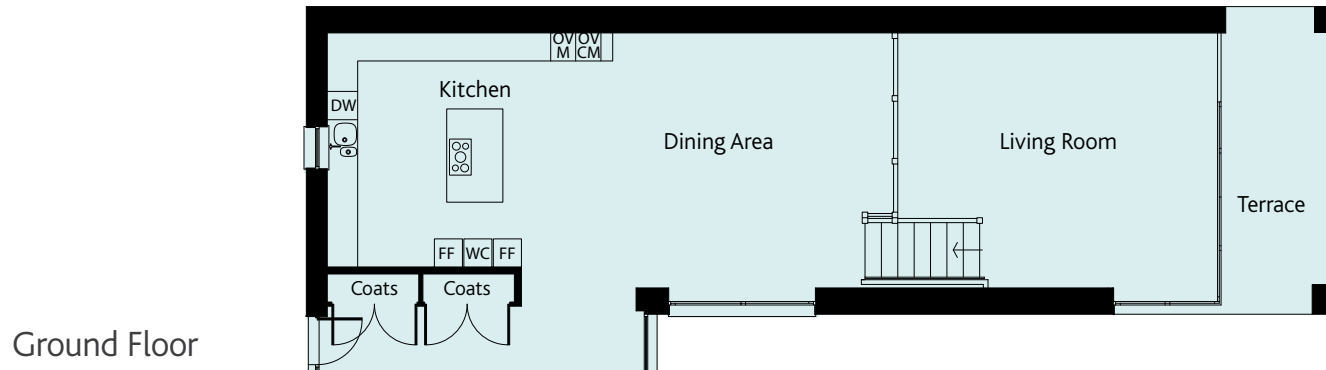
## KEY

W	Wardrobe
E/S	Ensuite
CM	Coffee Machine
M	Microwave
WC	Wine Cooler
OV	Oven
FF	Fridge / Freezer
WM	Washing Machine
TD	Tumble Dryer
HW	Hot Water Cylinder
	Hob



N°4





N°5

First Floor



# STUNNING ARCHITECTURE, LAKESIDE LOCATION

Your own unique bay surrounded by nature, woodland and water

The Mallards  
South Cerney  
Gloucestershire  
GL7 5TQ

T: 01793 701111  
E: [Elements@redrow.co.uk](mailto:Elements@redrow.co.uk)  
[www.redrow.co.uk/elements](http://www.redrow.co.uk/elements)

